

FRONT

READ ALL INSTRUCTIONS BEFORE BEGINNING INSTALLATION

INSTALLATION INSTRUCTIONS

- 1- REMOVE THE EXISTING SUN VISOR.
- 2- REDRILL EXISTING HOLES TO 1/2 in. AND INSERT WELLNUTS.
- 3- INSTALL THE BRACKETS ONTO THE CAB.
- 4- TEMPORARILY INSTALL THE SUN VISOR AS ILLUSTRATED
- 5- USE RECOVERED HARDWARE FOR HOLES ON BOTH ENDS OF SUN VISOR.
- 6- IF WITHOUT LIGHTS; SKIP TO STEP#10.
- 7- INSTALL THE LIGHTS ON SUN VISOR
- 8- CONNECT THE LIGHTS AND DIRECT WIRE TOWARDS CENTER.
- 9- FASTEN THE SUN VISOR USING THE FASTENING HARDWARE.
- 10- REINSTALL THE SUN VISOR ON THE CAB.

CAUTION

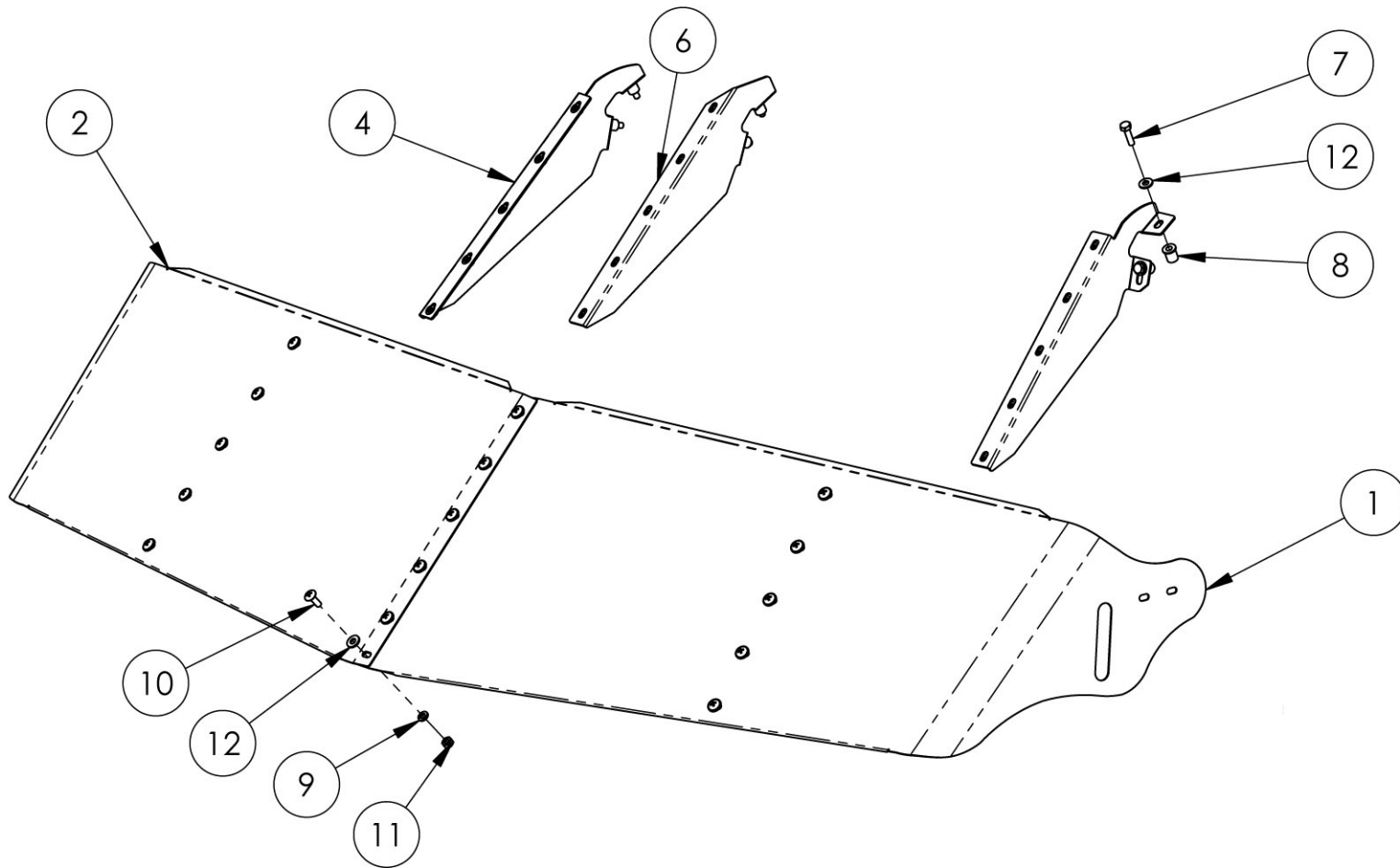
IT IS THE RESPONSIBILITY OF THE INSTALLER TO PLAN AHEAD THE ADEQUATE ELECTRICAL CONNECTION ACCORDING TO THE STANDARDS OF THE TRUCK MANUFACTURER AND DOT REGISTRATION.

- 11- CONNECT LIGHTS HARNESS TO THE TRUCK.
- 12- TIGHTEN ALL BOLTS AND SCREWS FIRMLY.



BACK

TRUX ACCESSORIES			
TITLE: SUN VISOR KENWORTH W900 & T800 GANGSTER SERIES FLAT GLASS			
SIZE A	DWG. NO. TSUN-K8		
NAME	DATE	REV	DATE
DRAWN BY P.W.	29-09-2008	PH1	-
SCALE: 1:24	WEIGHT: LBS	SHEET: 1 OF 1	



ITEM NO.	PART NO.	PART NO.	PART NO.	DESCRIPTION	QTY
1	M7231004SG	M7231005SG	M7231006SG	SUN VISOR PANEL	1
2	M7231004SD	M7231005SD	M7231006SD	SUN VISOR PANEL	1
3	K7231004BH	-	-	HARDWARE KIT INCLUDES :	1
4	-	-	-	PR9231004-D00	1
5	-	-	-	PR9231004-G00	1
6	-	-	-	PR9231004-C00	1
7	-	-	-	HEX. BOLT 1/4"NC X 1	6
8	-	-	-	WELL NUT 1/4"-20NC	6
9	-	-	-	LOCK WASHER 1/4" SS	16
10	-	-	-	TRUSS PHILIPS 1/4"-20NCX3/4"SS	16
11	-	-	-	HEX NUT 1/4-20NC	16
12	-	-	-	FLAT WASHER 1/4"	22

TRUX ACCESSORIES

TITLE:
SUN VISOR KENWORTH
W900 & T800 GANGSTER SERIES FLAT GLASS

SIZE DWG. NO. **A TSUN-K8**

NAME	DATE	REV	DATE
DRAWN BY P.W.	29-09-2008	PH1	-

SCALE: 1:24 WEIGHT: LBS SHEET: 1 OF 1